

Telalarm HF-2 Big Button (BB)

Emergency telephone / Auto-dialer

Description:

The Telalarm HF-2 Big Button (BB) is a hands-free emergency telephone auto-dialer. At the press of a button, the HF-2 dials a primary telephone number. If the number is busy or does not answer, the HF-2 will hang up and dial the next number and so on, up to 10 numbers. A call progress lamp is provided on the front of the unit for the benefit of the hearing impaired. When the CALL button is pressed, the lamp flashes to indicate a call being placed. When the call is answered, and the unit recognizes that someone is speaking to the unit, the lamp glows continuously.

Features:

- ▲ Automatically dials a programmed telephone number of up to 16 digits. For added security, the HF-2 can be programmed to autodial up to 10 numbers. .
- ▲ Two modes of operation, standard emergency dialing mode or emergency ring-down mode.
- ▲ Emergency mode calls can only be terminated by remote attendant.
- ▲ One output relay for control of emergency strobe equipment.
- ▲ Operates on 12v AC or DC. with telephone line power backup
- ▲ Programmable site ID.
- ▲ High clarity carbon microphone and fiber speaker.
- ▲ Remotely programmable from any touch-tone telephone. or optional RS232 real time polling/programming interface,
- ▲ Equipped with call progress lamp for compliance with the Americans with Disabilities Act (ADA).
- ▲ Non-corroding #316 Stainless Steel weather resistant enclosure with 'tamper resistant' security screws.
- ▲ Slim design for easy mounting.

Applications:

- ▲ "Area of rescue" telephone for high rise buildings needing ADA compliance.
- ▲ Emergency telephone for public areas.
- ▲ Security/Help telephone for parking structures.



Operation:

At the touch of a button, the Telalarm HF-2 Big Button (BB) calls a programmed telephone number. If the called number is busy or does not answer, the HF-2 will automatically dial a second number and so on up to 10 telephone numbers.

It will continue dialing until answered. Once answered, assistance may be rendered. The Telalarm HF-2 Big Button (BB) has two operating modes:

Standard Emergency Mode:

As soon as the call button is pressed, the unit engages its primary relay for the duration of the call, and then begins dialing according to its programming. This call can only be terminated by the answering party. This mode is frequently used for help, assistance, and duress call applications. Warning lights and camera switches may be attached to the relay. This provides immediate notification and attention to problem situations.

Ring Down Mode:

When call button is pressed, the unit engages its primary relay for the duration of the call, activating the emergency strobe light. The HF-2 seizes the telephone line and waits for the PBX to dial a preprogrammed number.

This call may only be terminated by the called party. The optional ring down mode is set to utilize "Called Party Disconnect". The HF-2 will hang up within 8 seconds after the called party hangs up.



Telalarm HF-2 Big Button (BB)

Emergency telephone / Auto-dialer

Specifications:

Design- Hands-free speaker telephone. Single button operation.

Capacity - Up to 10 numbers, each up to 16 digits in length.

Operation Modes - Two; Standard Emergency and Emergency Ring down.

Response Assurance - Unit cannot be disabled by pressing call button after Emergency Mode operation sequence is started. Only remote attendant can terminate call.

Site ID - Programmable 4 digit code.

Programming - Remote via touch-tone telephone.

Power- 110V/12VAC, 40VA, Class 2, transformer included.

Output Ratings Power Relay: 5 AMPS @ 12VDC or 1 AMP @ 110VAC Output Duration - Duration of telephone call.

Inputs - Push-to-exit button or postal lock box.

Telephone Line - Standard touch-tone or rotary. Dedicated or extension line.

Mounting - Surface, with flush or pedestal mount options.

Construction . Non-corroding #316 Stainless Steel weather resistant enclosure and back plate with 'tamper resistant' security screws. . Double baffled, underwater rated, fiber material, speaker. High quality carbon microphone in an acoustical chamber.

Operating Temperature - -5° F to + 120° F

Accessories / Options:

▲ **Lighted Hood** - L.E.D. lighting adds increased protection to the unit.

▲ **Line Filter** - Suppresses RFI/EMI from input power line.

▲ **Flush Mount Back box with Bezel** - Used to flush mount the unit in wall or other surface. Bezel adds a clean finished look.

▲ **DECODER III**- Desktop device decodes and displays Site ID information.

▲ **Call MANAGER** - Call routing and switching system. Allows multiple HF-2 units to operate with few, or with no, outside lines.

▲ **Second Relay Option** - Adds an additional relay for control of a strobe, camera or whatever you choose.

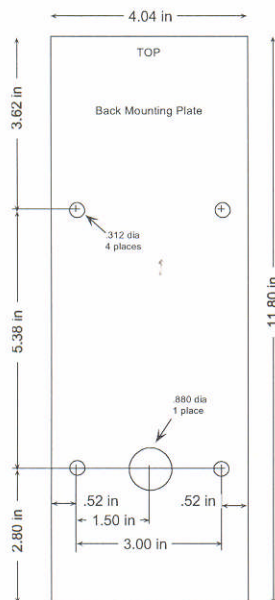
Fiber Optic Compatible:

International Fiber Systems model #'s:

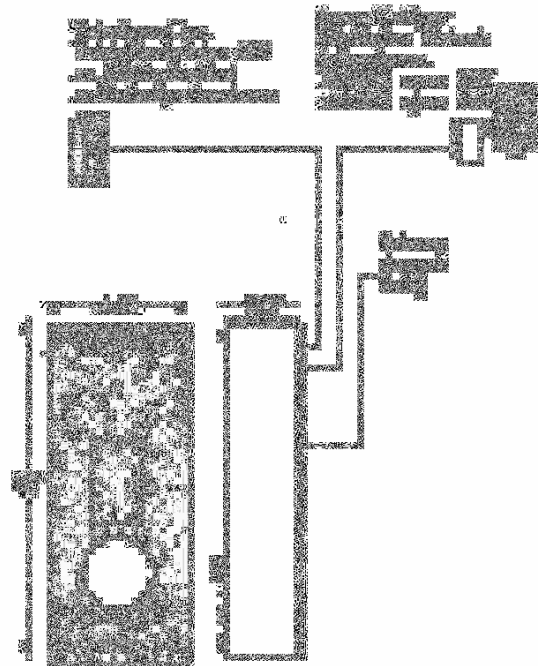
TT2010, TR2010, TT2010WDM, TR2010WDM

TT2030, TR2030, TT2039WDM, TR2030WDM

Mounting:



Dimensions / Hookup:



PH: (951) 371-1730 • FAX (951) 371-2592 • 255 Glider Circle, Corona CA 92880

www.TrigonElectronics.com